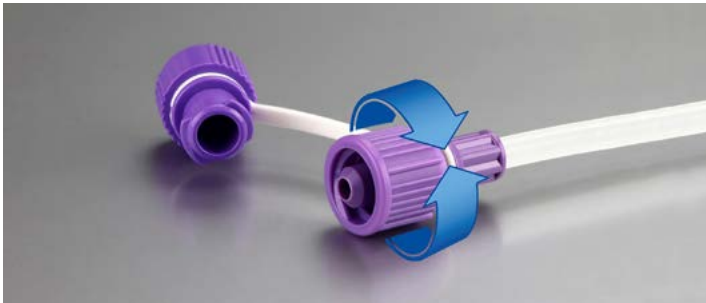




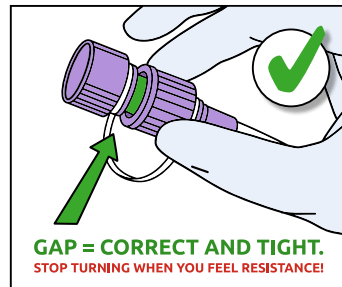
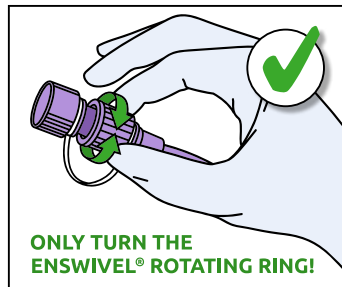
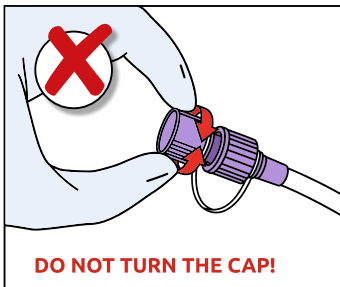
Experience seamless ENFit® connections with the innovative ENSwivel® rotating ring



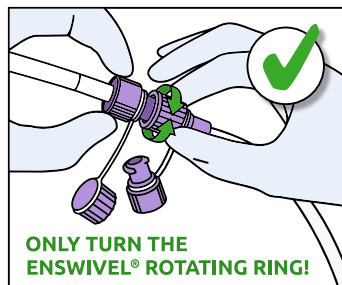
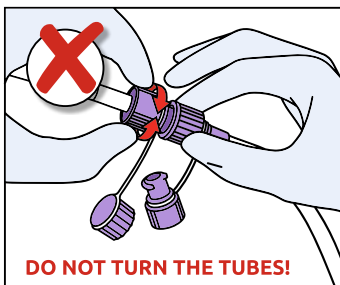
The ENSwivel® is a rotating ring crafted to encircle the ENFit® connector. With **just a fluid „Two-Finger-Turn“**, the ENSwivel® ensures effortless, tight and secure ENFit® connections on all danumed® Extension Sets, GastroTubes and Stopcocks. **Simple, fast, comfortable.**

The ENSwivel® transforms the connection process, enhancing user handling and patient comfort. Maximize its benefits by following the instructions below for correct usage.

How to connect the cap to the ENFit® connector:



How to connect two ENFit® systems:



Use a simple **"Two-Finger-Turn"** for a secure and tight connection, turning **ONLY** the ENSwivel® rotating ring.

Enjoy **twist-free connections** as only the rotating ENSwivel® is turned, not the entire system.

Stop turning when you feel a resistance – this indicates a tight connection with the correct visible gap.

Scan the QR code and watch the video on the seamless connection process with the ENSwivel®.



www.danumed.com/enswivel

A safer tomorrow starts with ENFit®!

ENFit® connectors are more than just a technological innovation – they are a commitment to patient safety! Globally recognized as the paramount patient safety initiative in enteral nutrition, ENFit® ensures secure and risk-free connections for both patients and healthcare providers.

For instance, an inadvertent connection between an enteral feed and an IV line could result in the infusion of nutrition into the vascular system, posing severe harm or even fatal consequences for the patient.

The ISO 80369-3 standard was established by the International Organization for Standardization (ISO) to mitigate this risk in the enteral section.



Did you know that ... ?

... all danumed products are equipped with ENFit® connectors according to ISO 80369-3.

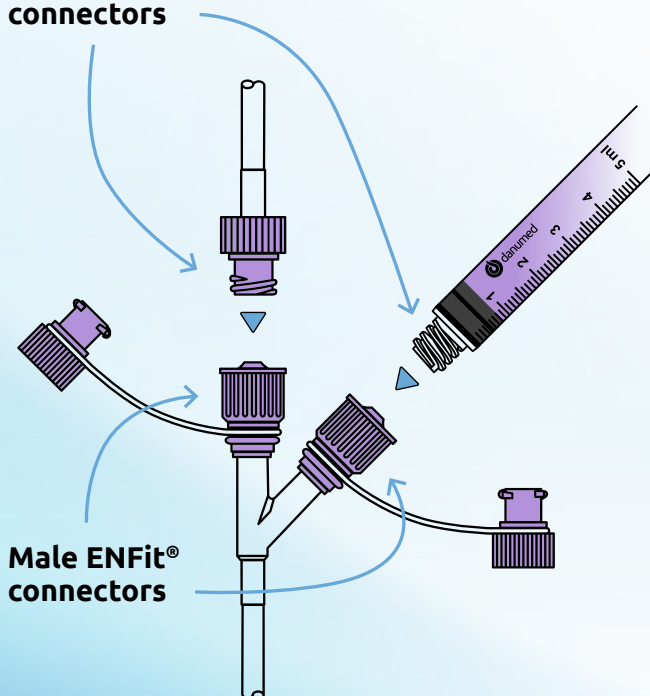
... danumed Medizintechnik GmbH is a member of GEDSA, the Global Enteral Device Supplier Association, Inc.

... ENFit® is a trademark of GEDSA.

... GEDSA created the Stay Connected initiative to coordinate and support the global implementation of ENFit®.



Female ENFit® connectors



Male ENFit® connectors

ENFit® connectors have a unique enteral-specific design that ...

... is mechanically incompatible with Luer connectors and connectors from other medical tubing systems

... minimizes the risk of tubing misconnections

ENFit® Connectivity

A female ENFit® connector always connects to a male ENFit® connector.

Male ENFit®:	Female ENFit®:
• Feeding Tubes	• Administration Sets
• Extension Sets	• Enteral Syringes

danumed Medizintechnik GmbH – Individual solutions are our standard.

We are an innovative, German medical technology company with the highest quality standards, many years of expertise in enteral nutrition and clear customer focus. We also meet individual customer requests with flexibility and reliability. Personal, competent, collaborative.

danumed Medizintechnik GmbH • Stadthof 18 • 93059 Regensburg • Germany
Tel + 49 (0) 941/ 890 588-80 • Fax + 49 (0) 941/ 890 588-81
info@danumed.com • www.danumed.com

